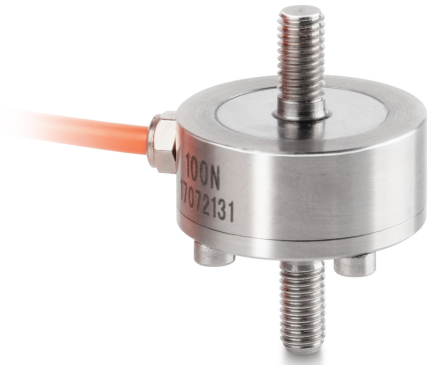


# KERN CO 500-Y2

# KERN

Miniature cylindrical load cell made from stainless steel



## Approval

CE mark ✓

## Construction

Design	Tension-/compression rod
Material	stainless steel
Cable length	2 m
Dimension (Ø×H)	51×70 mm
Mounting - force application	External thread M12
Mounting - force dissipation	External thread M12

## Functions

IP protection - complete device IP65

## Environmental conditions

Use temperature [Min]	0 °C
Use temperature [Max]	40 °C

## Packing & Shipping

Readability force [d] (N)	1 d
Dimensions packaging (W×D×H)	120×90×85 mm
Net weight	0,472 kg
Shipping method	Parcel service
Net weight approx.	0,50 kg
Gross weight approx.	0,55 kg
Shipping weight	0,516 kg

## Services (optional)

Article number for DAkkS calibration (tensile force)	963-163V
Article number for DAkkS calibration (compressive force)	963-263V
Article number for DAkkS calibration (tensile force/ compressive force)	963-363V

## Category

Brand	Sauter
Product category	Measuring cell
Product group	Load/force measuring cell
Product family	CO Y2

## Measuring System

Weighing capacity [Max]	500 kg
Load cell connection	4-wire
Load cell OIML class	G5
Load cell - characteristic value - nominal	1,5 mV/V
Load cell - Combined error	0,5%
Measuring applications	force mass
Load cell - Input resistance - nominal	350 Ω
Load cell - Output resistance - nominal	350 Ω
Load cell - Isolation resistance - [Min]	5000 MΩ
Load cell - Recommended excitation voltage [Min]	9 V
Load cell - Recommended excitation voltage [Max]	12 V
Load cell - Input resistance - variance	20 Ω
Load cell - Output resistance - variance	3 Ω
Measuring range force [Max] (N)	5 kN
Directions of force	tension compression

# KERN CO 500-Y2

Miniature cylindrical load cell made from stainless steel



## Pictograms

### STANDARD

---



### OPTION

---

